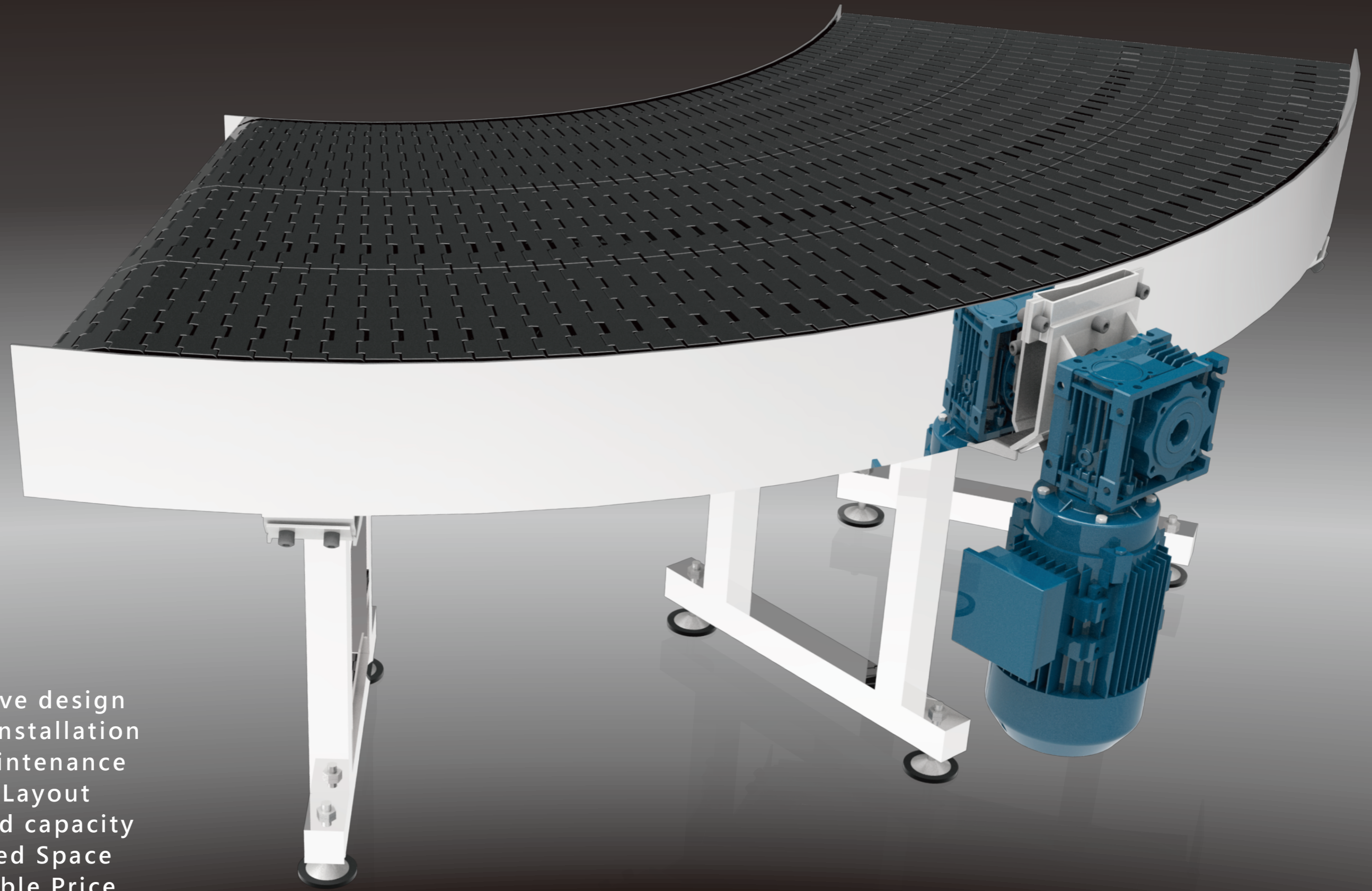


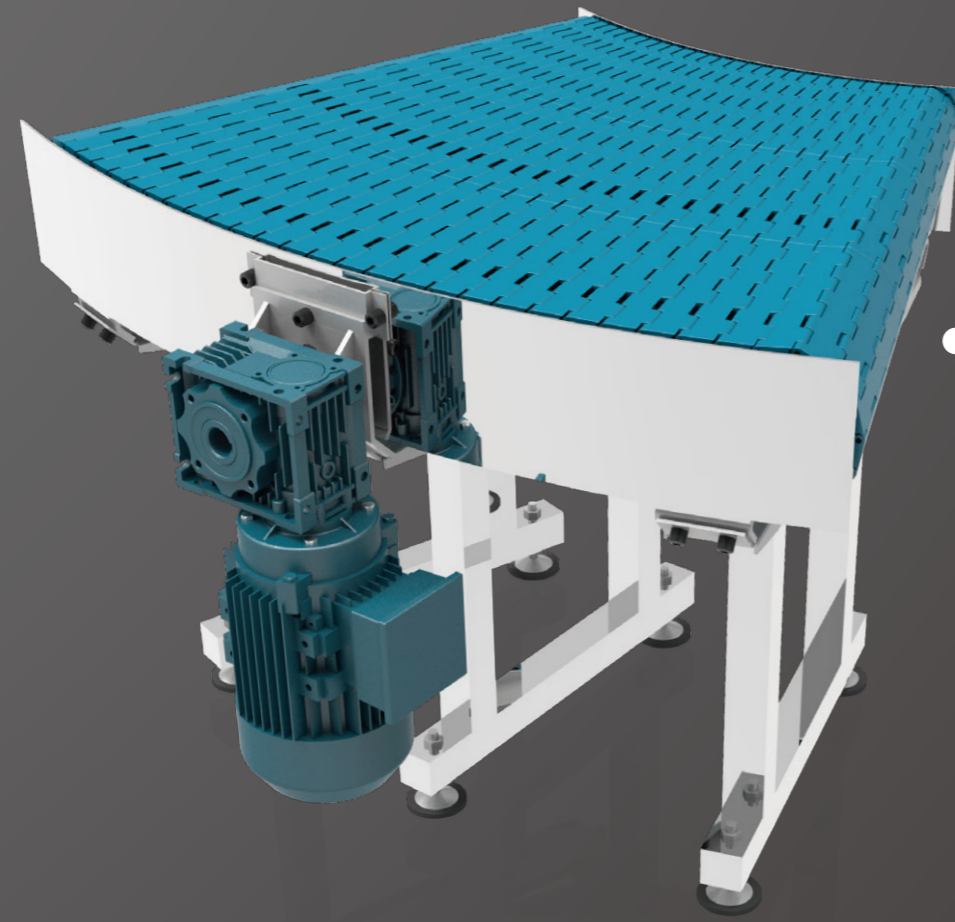
CURVE CONVEYOR



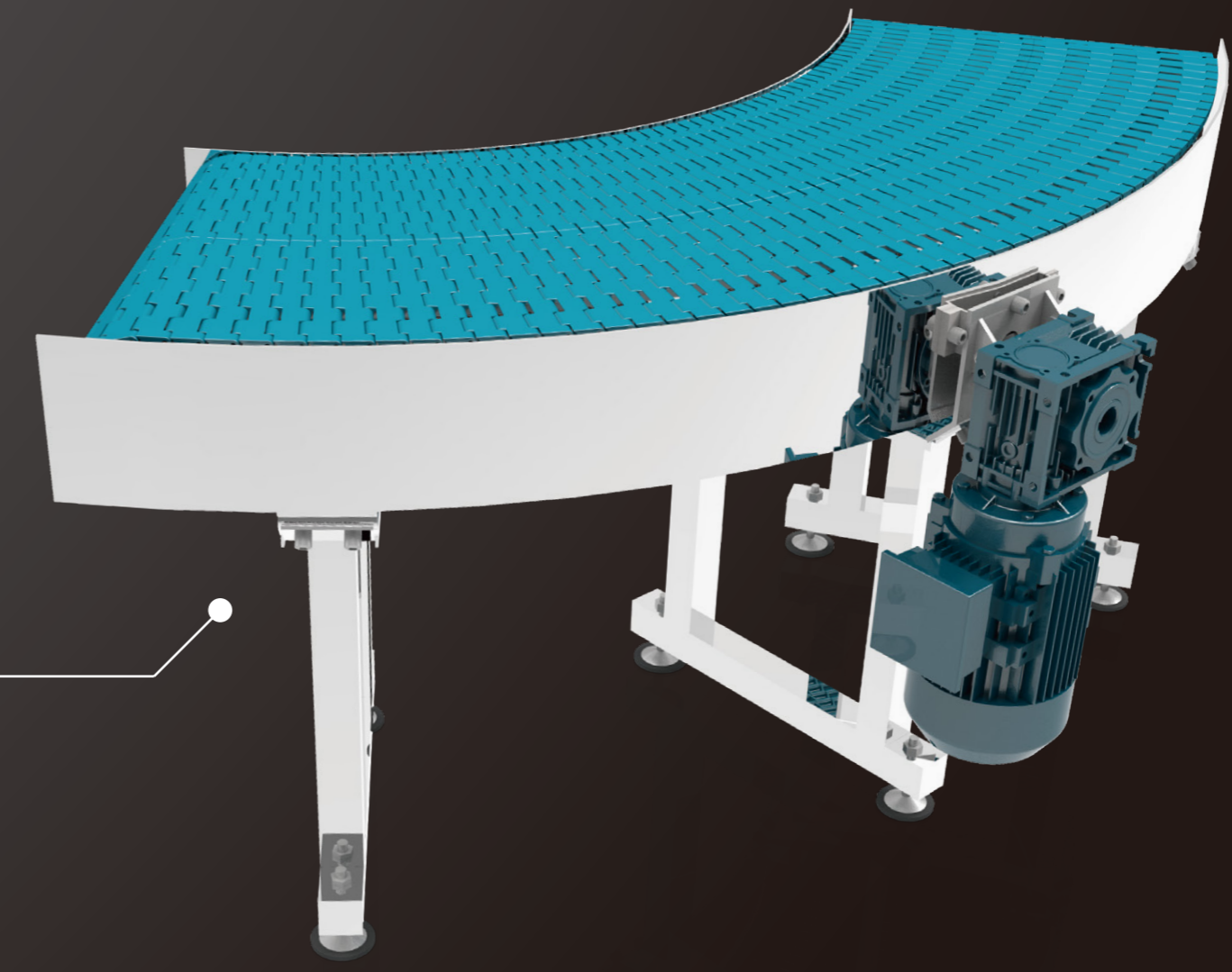
 **NEXUS** Engineering Corp.
www.nexus-spiral.com



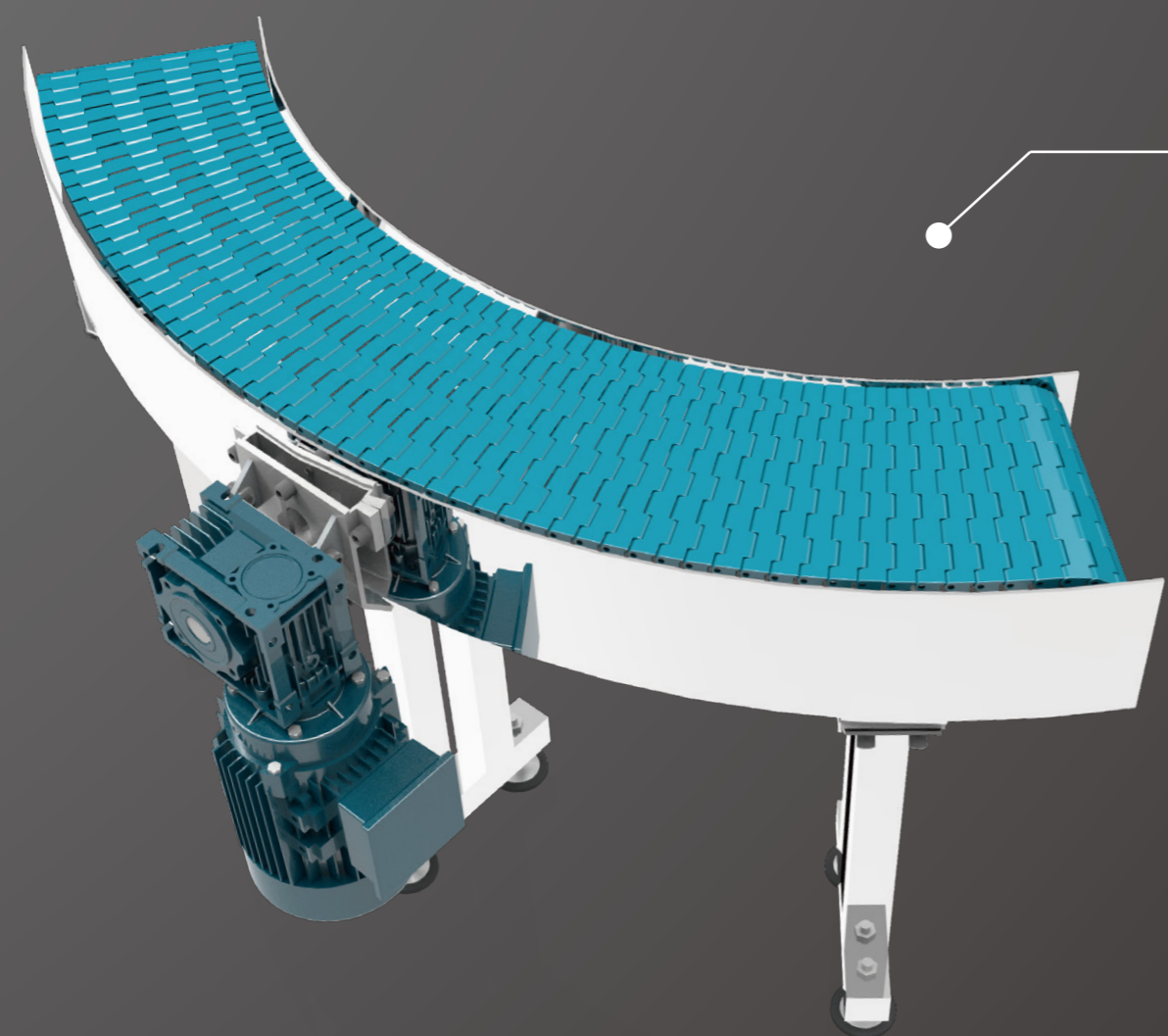
Innovative design
Simple Installation
Easy Maintenance
Flexible Layout
Improved capacity
Optimized Space
Unbeatable Price



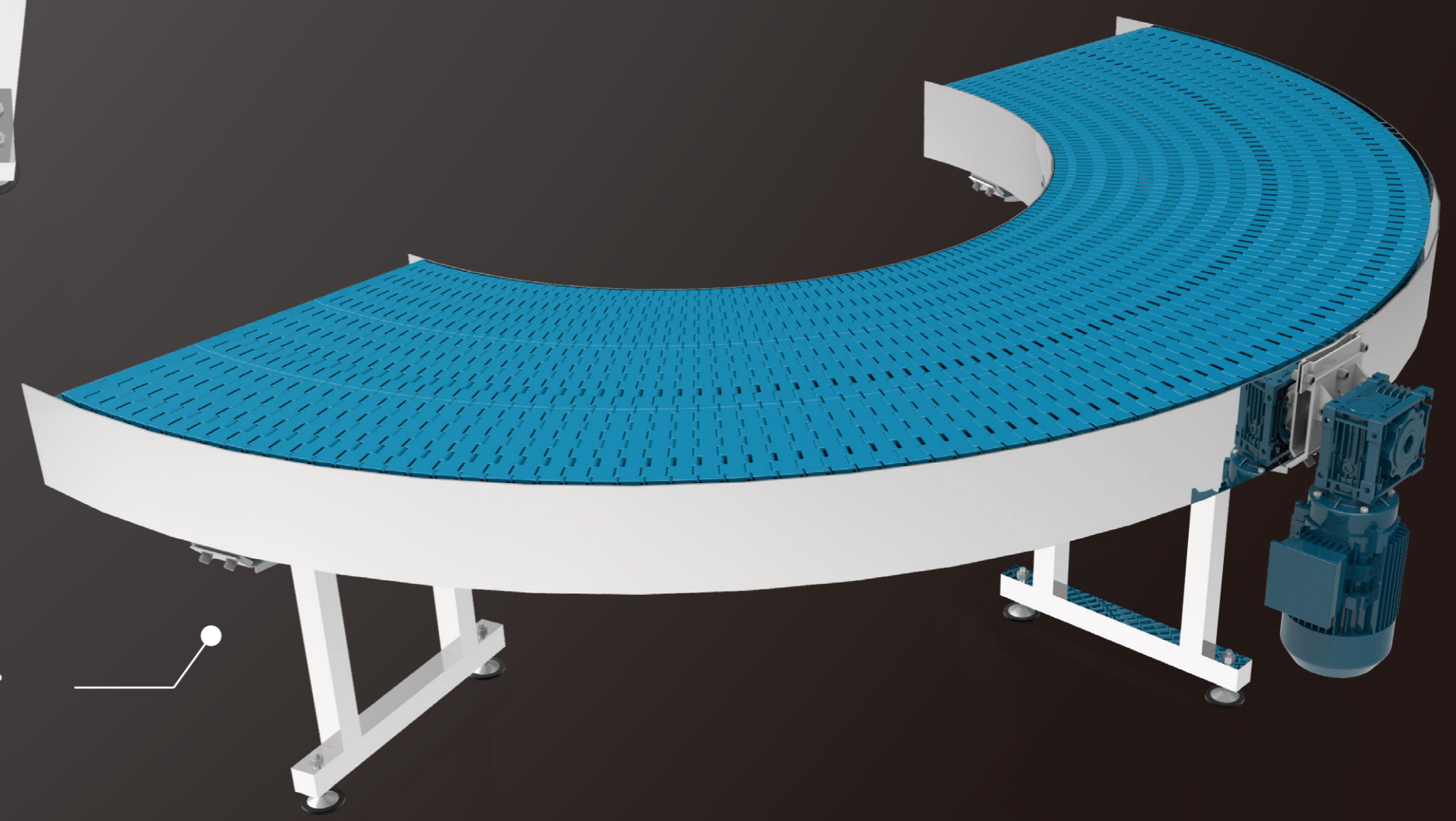
Curve conveyor - 600mm & 45°



Curve conveyor - 400mm & 90°



Curve conveyer - 200mm & 90°

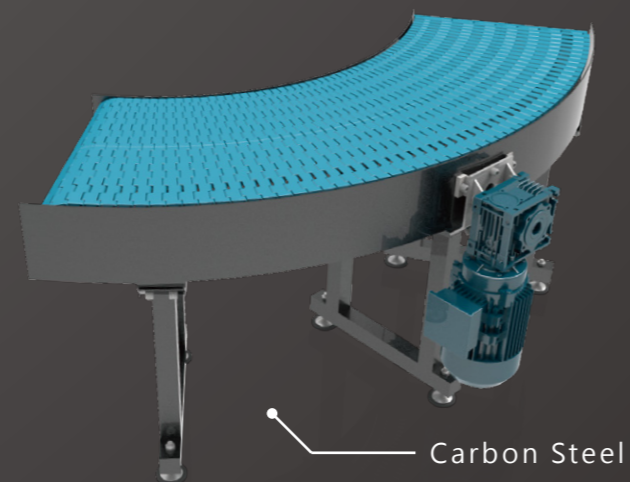
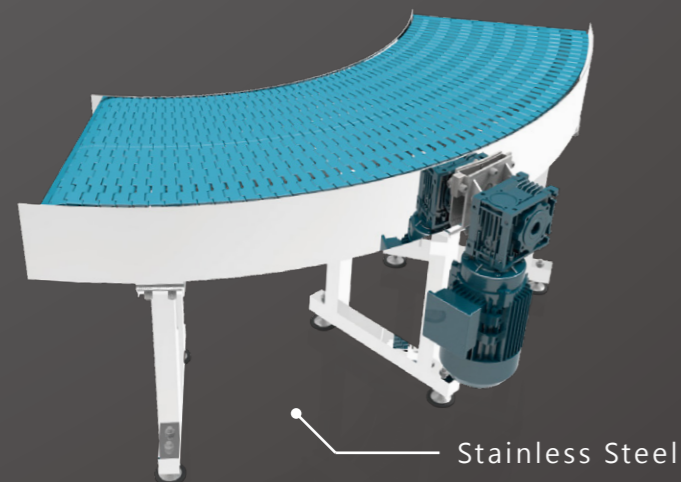
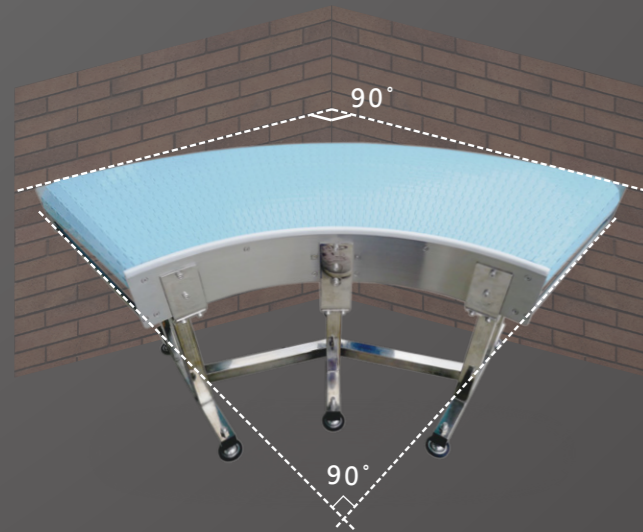


Curve conveyer - 600mm & 180°

NEXUS Curved conveyors, overcome the defects of traditional conveyors as following

Innovative design

- ◆ Central driving design(patent), achieving same effectiveness of bi-directional running, overcome the insufficient thrust of single-direction running.
- ◆ Modular conveyor belt is used to prolong the conveyor life time, which is at least 3 times longer than PVC belt curved conveyor.
- ◆ The world's first automatic angle calibration method of steel plate cutting, with bearings hidden in two ends, reduce the conveyor width to maximum extent.



Improved performance

- ◆ 600mm inner turning radius, different with other common curved conveyor and no need of straight section, saving more space.
- ◆ Driven by sprockets, the conveyor belts run smoothly without slippage, keeping the operation stable and safe.
- ◆ Improved load capacity, it can up to 500kg, which can satisfy the requirements both for light-duty and heavy-duty, food and non-food conveying.

Conveyor Belt

Accurate angle

- ◆ Angle of the conveyor belt is accurate and without any error ;

Seamless belt surface

- ◆ 0% open area conveyor belt surface, it is impossible for other common curved modular belts and they are always flush grid. Seamless surface can satisfy the requirements which have high demand for belt surface.

Big load capacity

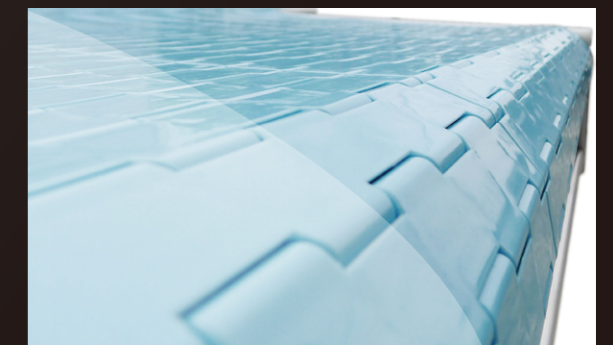
- ◆ Made from polymer plastic material, the conveyor belt of curved conveyor is high in impact resistant and low in friction; The tensile force is over 10 times more than that of common PVC conveyor belt.

Various material optional

- ◆ Different material including PP, PE, POM and PA is optional for various operating environment.
- ◆ You can appoint FDA material, or common industrial standard material.

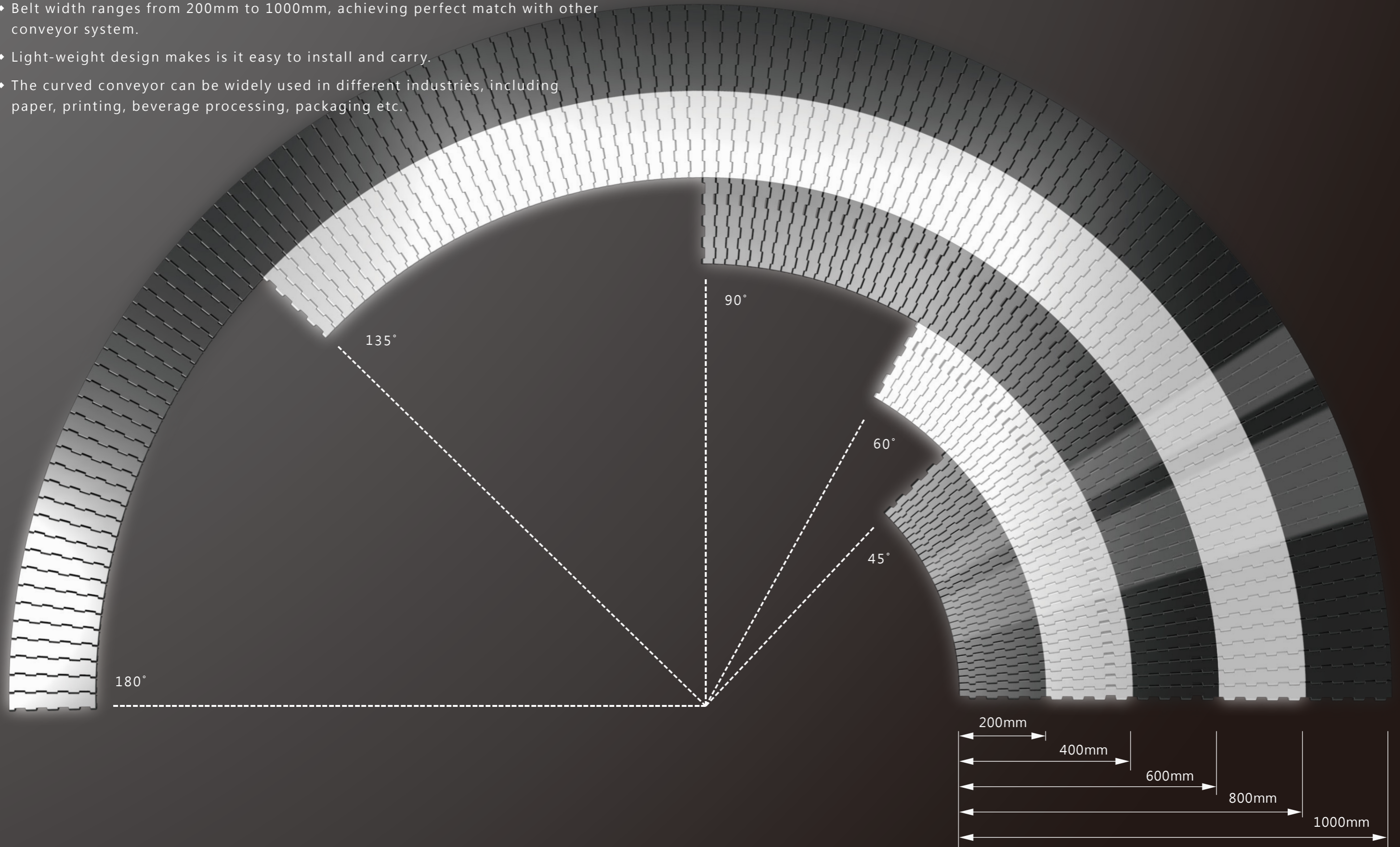
Easy to maintain

- ◆ modular design of the belt makes the replacement and maintenance as easy as playing Legos, shorten the downtime in utmost.
- ◆ You can purchase new belt or modules from NEXUS to replace the old one without professional train.



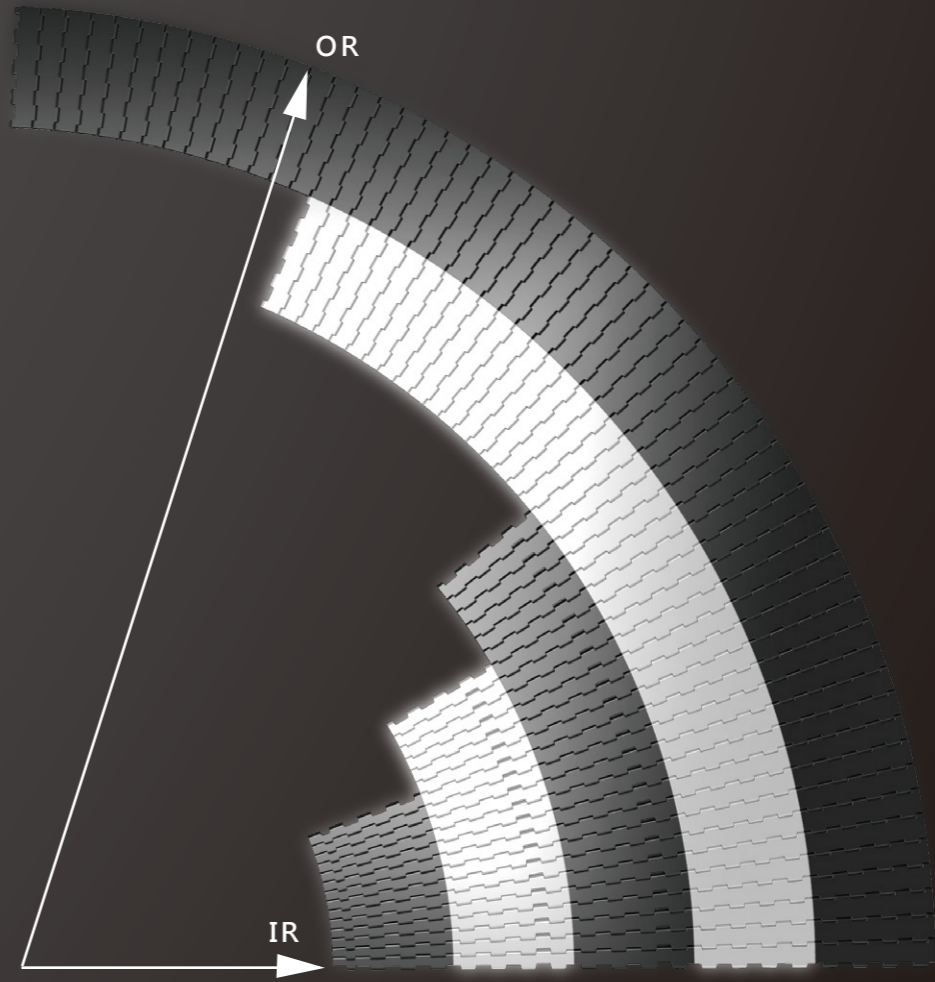
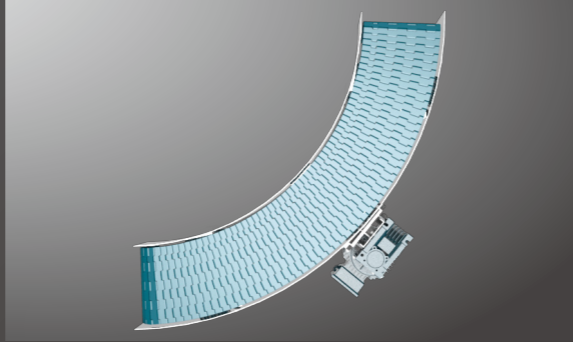
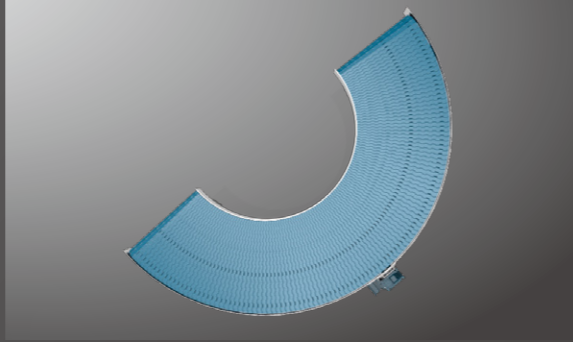
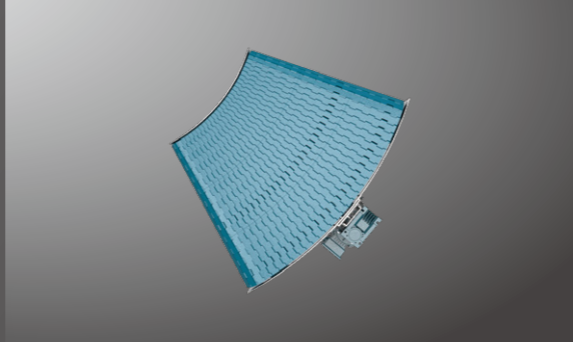
Flexible application

- ◆ Both speed and transport directions are adjustable according to difference demand.
- ◆ 90 degree and 180 degree are standard angle, other degree such as 45/60/135 degree can be customized.
- ◆ Belt width ranges from 200mm to 1000mm, achieving perfect match with other conveyor system.
- ◆ Light-weight design makes is it easy to install and carry.
- ◆ The curved conveyor can be widely used in different industries, including paper, printing, beverage processing, packaging etc.



Specification

- ◆ Material of conveyor belt: Please refer to the feature description of modular belt.
- ◆ Material of conveyor frame: Mild steel painted (RAL color optional) and Stainless steel.
- ◆ Material of sprocket: POM
- ◆ Inner turning radius: 600mm(min.)
- ◆ Angle: 90 degree and 180 degree are standard angle, other degree such as 45/60/135 degree can be customized.
- ◆ Belt width: Standard conveyor belt width is 200mm, 400mm, 600mm, 800mm and 1000mm, achieving perfect match with other conveyor system.
- ◆ Maximum load capacity:110 KG/200mm(W)
- ◆ Maximum speed: 60M/Minute
- ◆ Working temperature: -30°C-100°C
- ◆ Transport direction: Right and left adjustable
- ◆ Height of conveyor: 850mm is standard width, other height can be customized.
- ◆ Side guard: Please let us know in advance if you need it, 25mm and 50mm are common height.



mm

Outer radius (OR)		Belt width				
		200	400	600	800	1000
Inner Radius (IR)	600	800	1000	1200	1400	1600
	800	1000	1200	1400	1600	
	1000	1200	1400	1600		
	1200	1400	1600			
	1400	1600				



NEXUS

TEL : +886 6 5898701

FAX : +886 6 5894970

Website : www.nexus-spiral.com

E-mail : service@nexus-spiral.com

No.477-1, Dashe, Xinshi Dist.,

Tainan City 744, Taiwan(ROC)