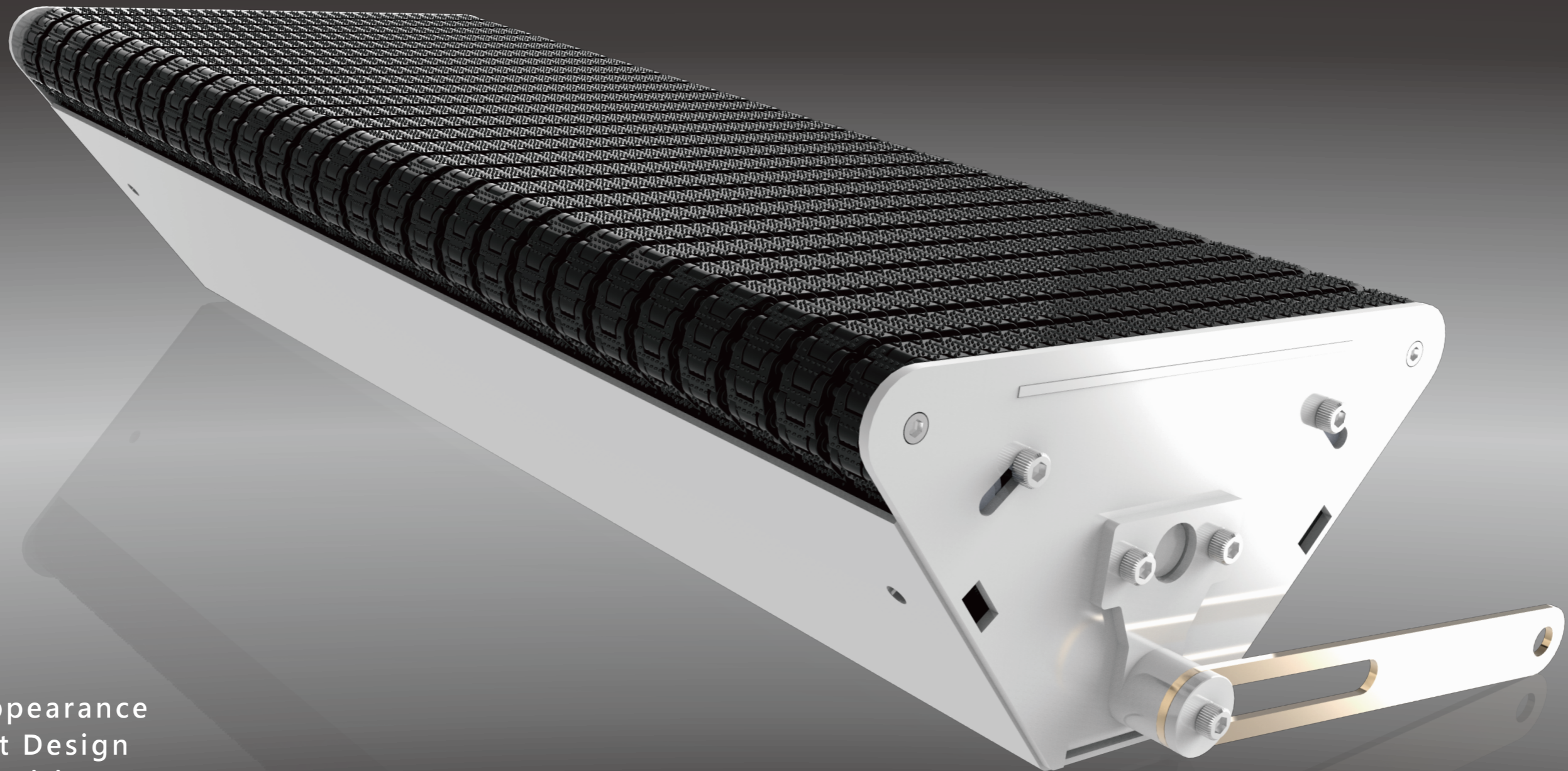


MINIATURE CONVEYOR



 **NEXUS** Engineering Corp.
www.nexus-spiral.com

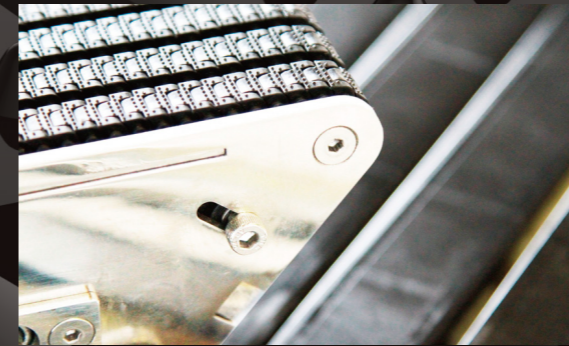
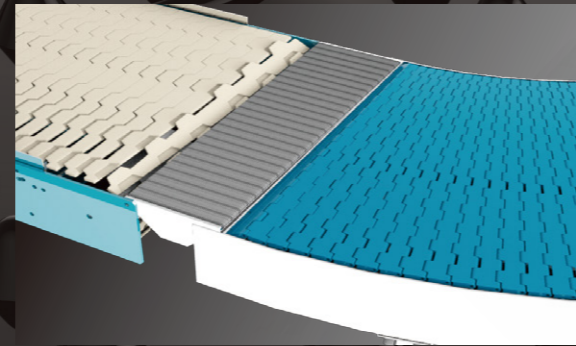
NEXUS Miniature Conveyor
the combination of technology and art.



Delicate Appearance
Lightweight Design
Perfect Transition
Multiple Application
Flexible Manufacturing

NEXUS Miniature Conveyor help you to achieve perfect transition.

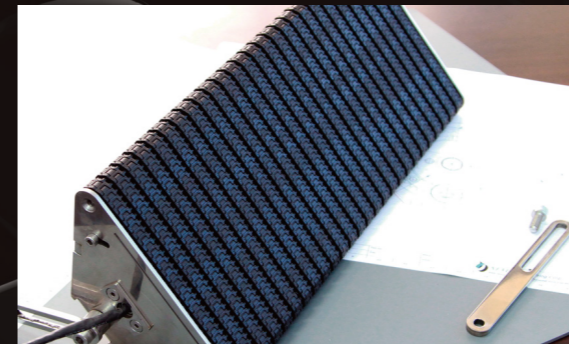
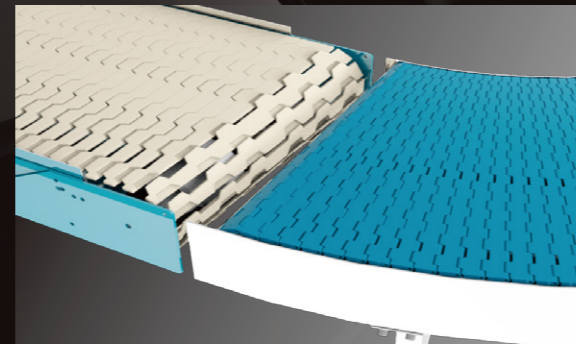
The objects sometimes have risk of falling in the triangular area between the rollers if their length is shorter than the diameter of connecting rollers. The traditional solution is to use finger transfer plate as bridge, under this case, preceding items are inefficiently propelled by the following ones, so this method is defective.



Delicate Appearance

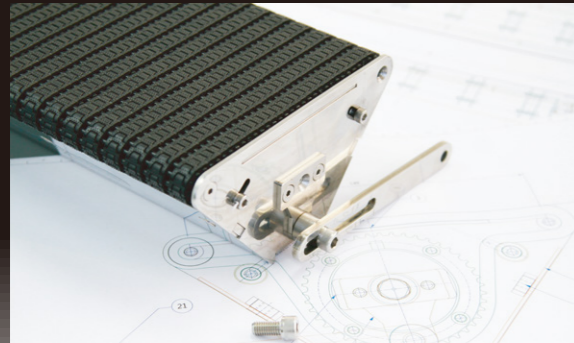
5mm pitch and Self-lock design bring easy assembling and dismantling, the nab-top surface increases the friction in conveying.

The outer diameter of our Miniature conveyor is only 19mm, which can make smooth and successful transition for most of solid object.



Intelligent Design

- ◆ Built-in motor, bringing streamline frame and low noise lever.
- ◆ Thickness of the conveyor is less than 100mm, so easy to carry and install it.
- ◆ The speed is adjustable, which can satisfy the needs for different application

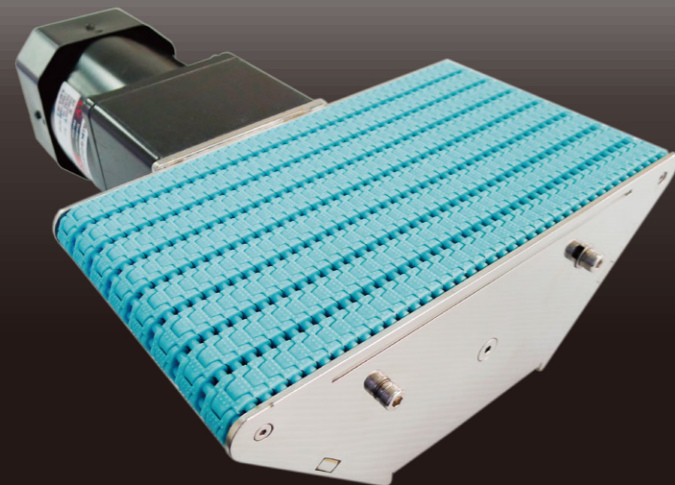


Excellent Quality

- ◆ Stainless steel frame, which can be used in both food and non-food industry.
- ◆ Load capacity can up to 45kg (depends on types of motors).
- ◆ The conveyor belt is bidirectional and the direction can be changed flexibly.
- ◆ We have strict standard to choose the accessories and keep improving of producing to ensure the durability and life time of our Miniature conveyor.

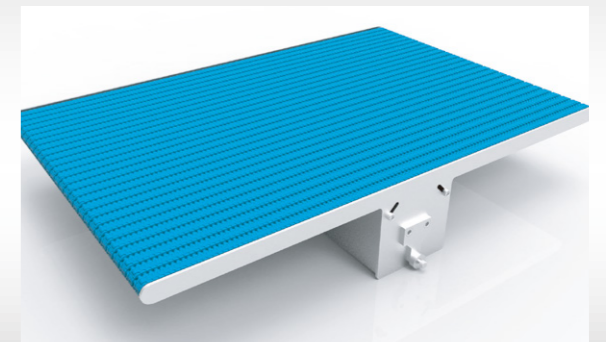
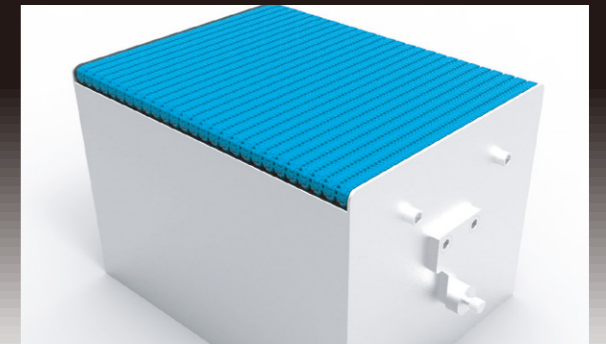
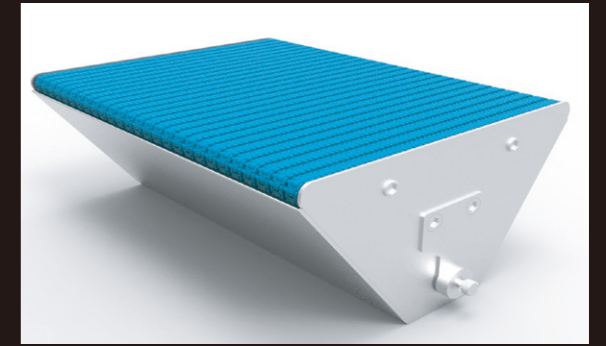


Stainless steel



Technical Data

- ◆ With built-in motor roller as power, the minimum available width is 300mm, and the minimum length is 150mm (central distance between shafts). Less than this specification the motor will be external, and there are AC small motor, DC small motor and hollow shaft type motor for your choice.
- ◆ Standard thickness of this conveyor is 90mm, if have special requirements, please contact our customer service department.
- ◆ Original design of this conveyor not include feet, please inform our customer service department if with demand.
- ◆ Customized manufacturing. The choice of colors, materials and the application of auto control system of the conveyor are in your hands.





NEXUS

TEL : +886 6 5898701

FAX : +886 6 5894970

Website : www.nexus-spiral.com

E-mail : service@nexus-spiral.com

No.477-1, Dashe, Xinshi Dist.,

Tainan City 744, Taiwan(ROC)